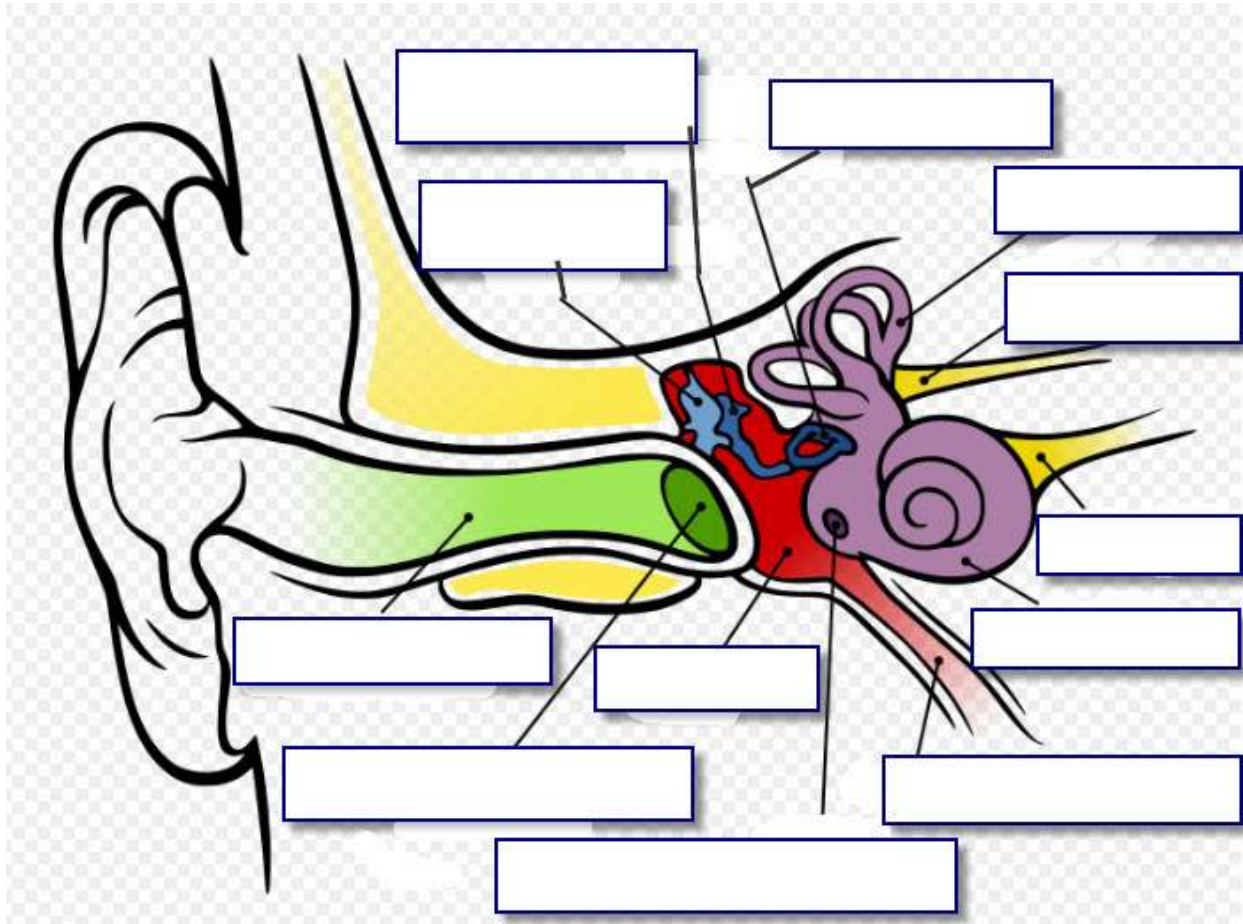


# Ear Diagram



Choose from the following words to label the drawing:

1. Eustachian Tube
2. Cochlea
3. Stapes (Stirrup)
4. Semicircular Canals
5. Vestibular Nerve
6. Incus (Anvil)
7. Tympanic Cavity
8. Tympanic Membrane
9. External Auditory Canal
10. Malleus (Hammer)
11. Round Window
12. Cochlear nerve

# Ear Diagram

